

## SPECIFICATIE

## DATA SHEET



### DAKVENTILATOR



DVS 400 E4-LN

### ROOF FAN

General data:

Algemene gegevens:

Maximale luchthoeveelheid	m <sup>3</sup> /h	<b>3.992</b>	m <sup>3</sup> /h
Toerental waaier	rpm	<b>1.344</b>	rpm
Vermogen	kW	<b>0,466</b>	kW
Spanning	V/Hz	<b>1x230/50</b>	V/Hz
Stroomsterkte	A	<b>2,32</b>	A
Beschermingsklasse	IP	<b>54</b>	IP
Geluiddruk niveau ±2 *	dB(A)	<b>46,0</b>	dB(A)
Gewicht	kg	<b>27,0</b>	kg

\* (op 4m van de uitblaa zijde van de ventilator, onder vrije veld condities)

Maximum capacity
Impeller speed
Power
Electric supply
Full load current
Enclosure
Sound pressure level ±2 *
Weight

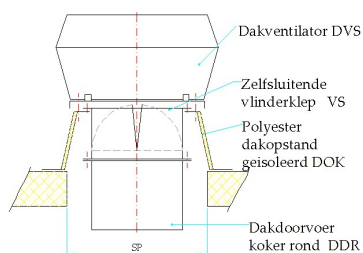
\*(at 4m from the fan outlet, in free field)

### Opties

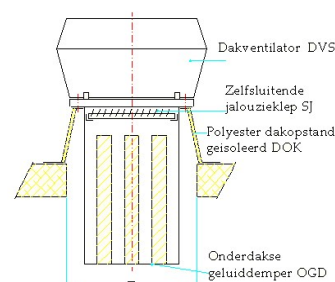
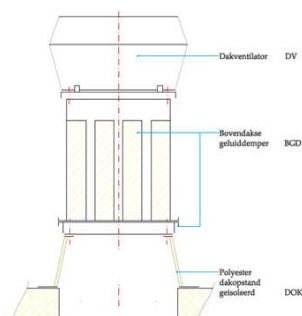
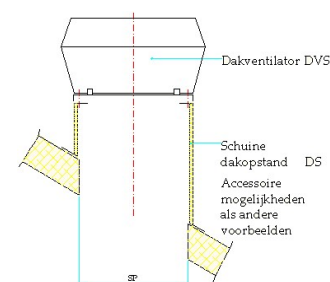
Dakopstand vlak dak	<b>DOK 355/400</b>
Onderdakse geluiddemper	<b>OGD 355/400</b>
Bovendakse geluiddemper	<b>BGD 355/400</b>
Zelfsluitende jalouzieklep	<b>SJ 355/400</b>
Dakdoorvoerkoker	<b>DDR 355/400/450/500</b>
Zelfsluitende vlinderklep	<b>VKS 355/400/450/499/500</b>
Dakopstand schuindak	<b>DS 355/400</b>
Dakopstand schuindak/loodslabbe	<b>DSL 355/400</b>
Toerenregelaar	<b>STRA1-25L22</b>

### Accessories

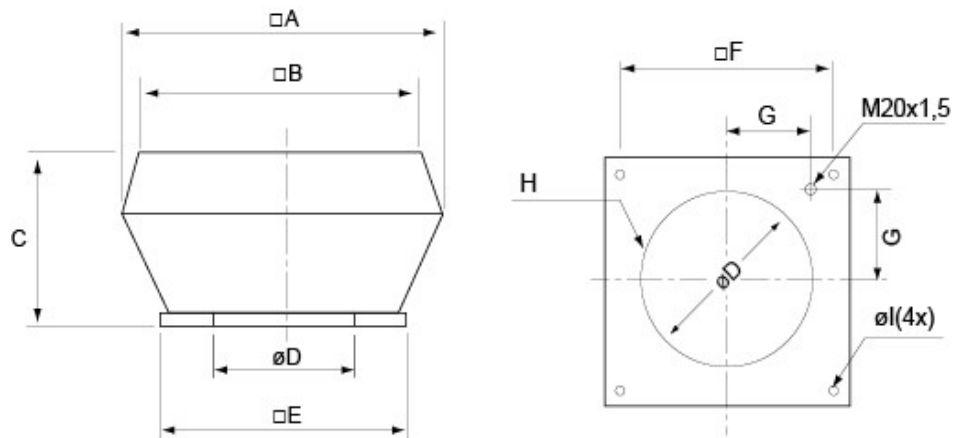
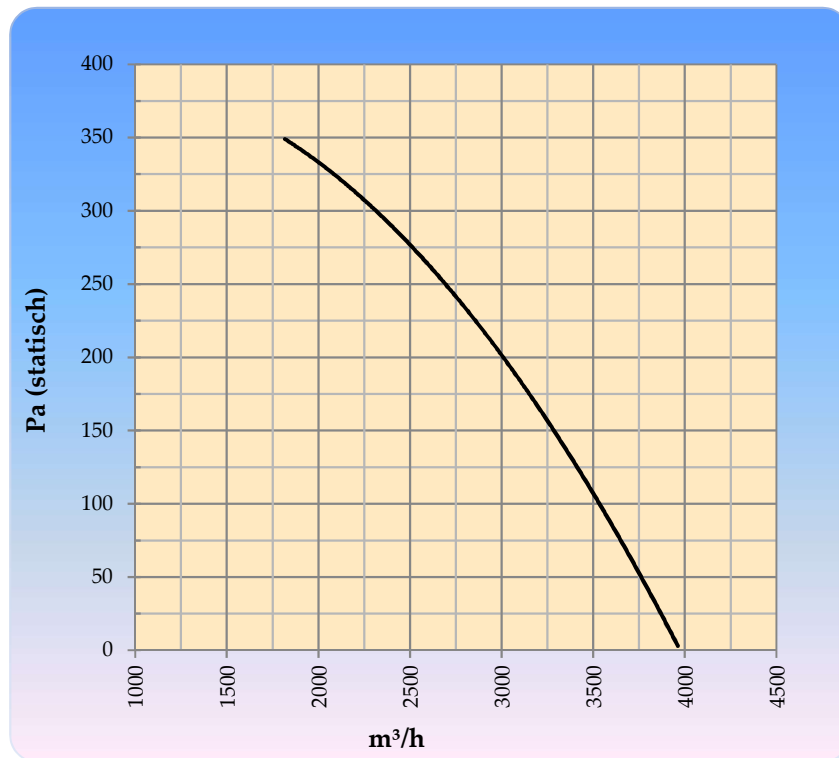
Flat Roofsocket
Square roof passage with silencer
Silencer between fan and socket
Automatic louvre shutter
Roof passage, round
Automatic shutter
Slope roof socket
Slope roof socket/lead flashing
Speedcontroller



### montage voorbeelden



## Grafiek & Maatvoering



□A	□B	C	∅D	□E	□F	G	H	∅I
720	618	390	438	595	450	200	6xM8	12(4x)