

SPECIFICATIE

DATA SHEET



DAKVENTILATOR



ROOF FAN

Algemene gegevens:

DVS 310 E4

General data:

Maximale luchthoeveelheid	m ³ /h	1.462	m ³ /h
Toerental waaier	rpm	1.375	rpm
Vermogen	kW	0,114	kW
Spanning	V/Hz	1x230/50	V/Hz
Stroomsterkte	A	0,526	A
Beschermingsklasse	IP	44	IP
Geluiddruk niveau ±2 *	dB(A)	44,0	dB(A)
Gewicht	kg	12,3	kg

Maximum capacity
Impeller speed
Power
Electric supply
Full load current
Enclosure
Sound pressure level ±2 *
Weight

* (op 4m van de uitblaa zijde van de ventilator, onder vrije veld condities)

*(at 4m from the fan outlet, in free field)

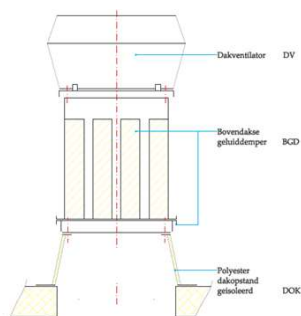
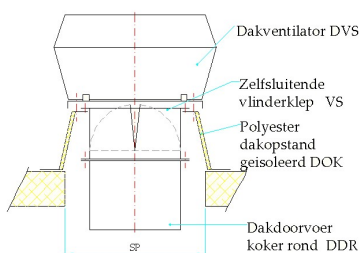
Opties

Dakopstand vlak dak
Onderdakse geluiddemper
Bovendakse geluiddemper
Zelfsluitende jalouzieklep
Dakdoorvoerkoker
Zelfsluitende vlinderklep
Dakopstand schuindak
Dakopstand schuindak/loodslabbe
Toerenregelaar

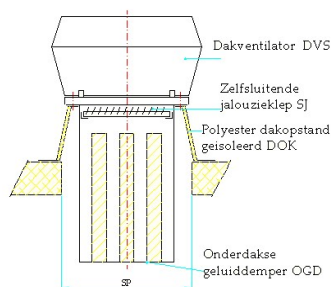
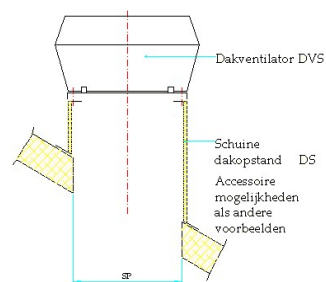
DOK 310/311/315
OGD 310/311/315
BGD 310/311/315
SJ 310/311
DDR 310/311
VKS 310/311
DS 310/311
DSL 310/311
STR-1-10L10

Accessories

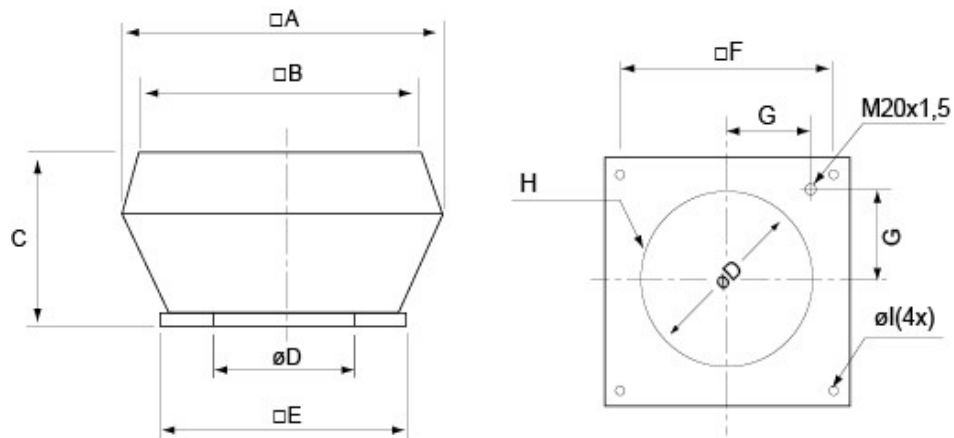
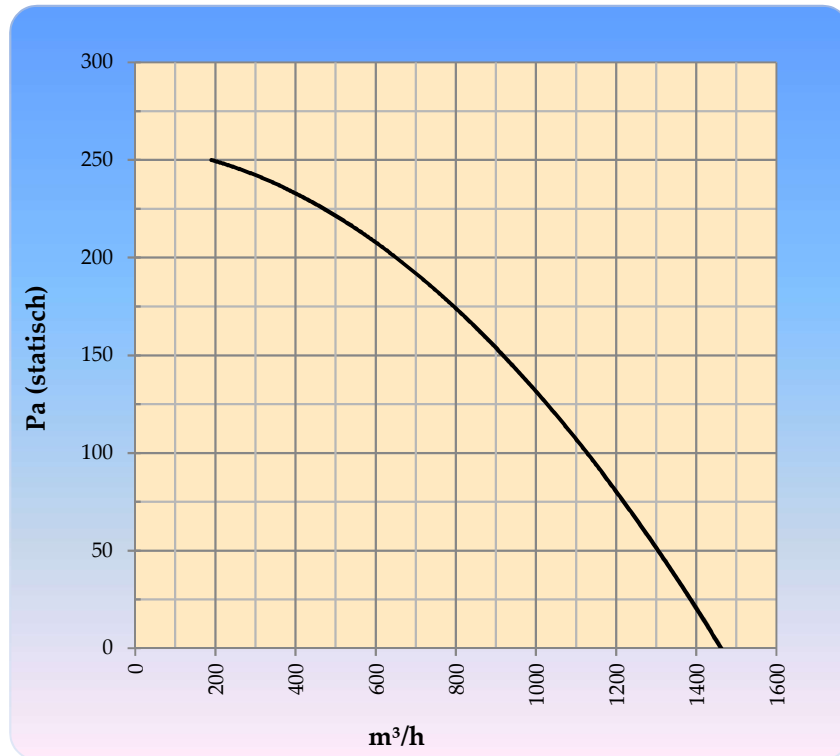
Flat Roofsocket
Square roof passage with silencer
Silencer between fan and socket
Automatic louvre shutter
Roof passage, round
Automatic shutter
Slope roof socket
Slope roof socket/lead flashing
Speedcontroller



montage voorbeelden



Grafiek & Maatvoering



□A	□B	C	∅D	□E	□F	G	H	∅I
560	470	330	285	435	330	146	6xM6	10(4x)